



KARANI INTERIOR DECORATORS L.L.C.



Corporate Profile



DESIGN

SUPERVISION

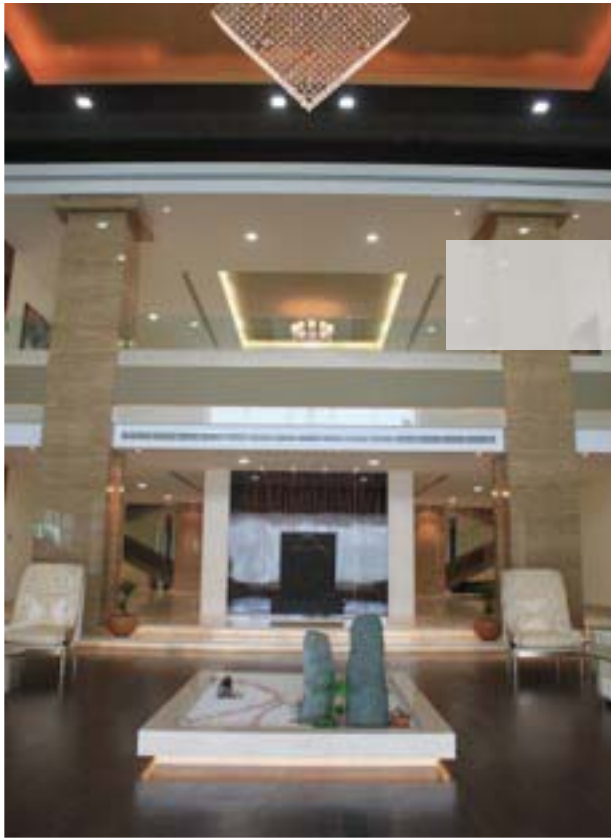
EXECUTION



Contents

We provide turnkey fit-out services and serve as one-stop solution provider for all types of interior spaces including but not limited to- residential, corporate, retail, hospitality sectors.

- Introduction*
- Our Philosophy*
- Why Karani*
- Team Karani*
- Facilities & Resources*
- Services & Products*
- Expertise*
- Projects*
- Clients*
- Quality Policy*
- Health & Safety Policy*
- Environment Policy*
- Contact*



Our mission is to create an impact in the world, mind, heart and soul of our stakeholders through focus on excellence at all times. We want our work to speak the language of perfection.

MISSION

*To be world's topmost stakeholder centric company;
provider of A-Z premier interior solutions to diversified sectors.*

VISION

KARANI STORY

Established in 1990, Karani Interior Decorators L.L.C. is a turnkey interior fit-out company, catering rising needs of design conscious market through delivering exclusive interior solutions.

Our reputation is well reflected by impressive portfolio of global and local projects and broad spectrum of our clients. Our experience enable us to take up wide range of challenging projects, whether it is a simple office or turnkey showroom fit-out, or comprehensive restaurant or residential work including integrated civil/MEP work or customized manufacturing of Wood-based Furniture or other Fit-Out Components. Our focus is on detail and full involvement in project activities in order to deliver A class premier solutions at all times.

This is what we've been practicing for over **25 years** now. The Karani brand in fit-out industry has stood the test of time for quality, integrity and progress. We are committed to superior workmanship and adhere to the principles of being on brief, on budget and on time.

Over the years, the business has successfully crafted an exclusive brand image in diverse segments of the market and now we are one of the most prestigious Interior Fit-Out Contractors in Dubai and worldwide.

Over **25** years

of excellent workmanship

Our Philosophy

Excellence at all times

We are committed to excellence and this philosophy is followed at all levels in the organization. Quality of our work speaks volume of our attention to perfection and uncompromising commitment to excellence.

Power to Client

Everything we do is focused on delivering value to our customers, to meet and exceed their needs and expectations.

People–Stakeholder centric

Our focus revolves around delighting our stakeholders i.e. on meeting the needs of our clients, staff and other stakeholders. We treat them as priceless assets and our greatest strength.

Creative Innovation

Innovation is in our blood. Our out of the box quality building services for diverse construction segments enable us to build trusted impressions. Our milestone building works and construction solutions are the results of this commitment.

Ethics first

We have zero tolerance for unethical behavior and keep ethics first. Integrity is our soul and can be observed in our transparent business practices.

Only Excellence

The language of perfection





Why Karani

Our Focus

Quality, integrity and honesty set Karani Interiors apart from other commercial contractors.

We, at Karani are totally committed to meeting and maintaining highest Standards of Quality at all times, as we believe, in service industry, client is King and a satisfied-happy client is everything!

- ◆ One-stop turnkey project services
- ◆ Highest Quality Standards
- ◆ Finest craftsmanship
- ◆ Productive collaboration

Strong Logistics **Fine Interiors** Perfection
Priciest collaborations Bespoke furniture
QUALITY MEP works **Innovation** Procurement
Committed to finest quality **Design Studio**
Skilled manpower **Estimation**
State-of-the-art machinery
Workshop

Visionary Management

Mr. Hanumant P. Suthar, Chairman

Keep walking. Keep believing

Mr. Hanumant, founder and Chairman of Karani, is an Architect by profession had a vision to create an organization which could cater rising needs of design conscious market through delivering exclusive interior solutions i.e. design supervision-execution of projects .He continues to lead the business and works for its betterment.

Mr. Ganesh Suthar, Director

Dream the impossible, do the remarkable

He is a visionary leader, who believe in achieving the unachievable, taking up challenging projects, building strong business relationships and client network. He is not just figurehead and personally involves himself in each project. Considers business as his child and put in his best efforts to nourish the company and the employees. This attitude and his focus on details and urge for excellence have contributed to the company's stellar performance and steady growth.





Team Karani


Business Development We believe in “Leveraging power of Connectivity” and the BD team focuses on enhancing relations with stakeholders and let our work speak. The team uses power of social media to connect with stakeholders and stand out as an exclusive brand which is known for providing exclusive Design-Supervision-Execution services to the clients worldwide, not just UAE. Commercial Managers & Marketing executives doesn't consider closing a deal or finishing a project as an end in itself, but a means to achieve delighted loyal client base. The team keep themselves updated with industry updates, events, exhibitions & conferences; trade shows etc. to grab any favorable opportunity as it arises.

Planning & Design The team comprises of designers & draftsman, who on receipt of enquiries, prepare detailed drawings, mood boards, prototypes for submission, lead kick off meetings, and support execution team with details, in coordination with estimation team. We consider planning stage as an important bridge that connects our present with desired future state/project outcome. Thus due importance is given to proper planning & concept execution blueprints.

Estimation & Contracts The team comprises of QS & estimators who ensure proper receipt of detailed enquiries, visit sites, prepare tenders, BOQs & cost estimates, submit final offer and contracts, in coordination with management, in-house departments & other stakeholders. Focus is on efficient costing & value based estimation. Most importantly, they coordinate with client and keep them informed about the latest development.

Project Management Project team includes Project Manager & Coordinator, Site Supervisors, Foreman etc. The focus is to execute project meeting its scope, time & budget requirements. A common Project Management policy is followed throughout the initiation and completion of every project to ensure smooth and on time execution & completion of projects.

Committed to togetherness
United with team spirit



MEP Our Mechanical Electrical Plumbing team comprises of specialist mechanical and electrical engineers. The team manages HVAC works (Heating, Ventilation-extract & fresh air system & Air conditioning), structured cabling/ ICT/ telephone/data/networking, CCTV & security system, fire protection & alarm, internal electrification (fittings & fixtures), lighting systems, home & business automation and control system etc.

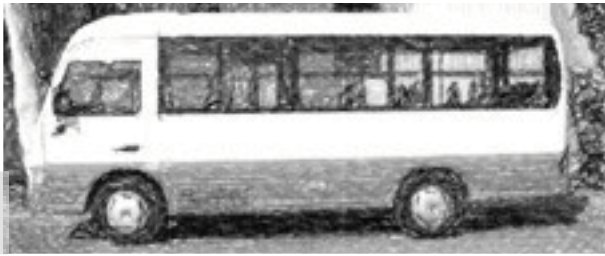
Procurement & Inventory The team comprises of highly efficient & experiences Purchase Officer & Storekeepers. They coordinate with project and accounts team to ensure proper procurement, allocation and storage of inventory. They deal with suppliers, vendors and subcontractors and process purchase documents & invoices, arrange for sample when required.

Administration & Finance The team oversees management of finances for entire company. It manages company operations, coordinates procurement, stores and projects activities to ensure smooth & efficient operations. Raising and managing invoices, keeping track on expenses and income, employee salary management, budgeting & planning for cash, generating MIS reports and ensuring compliance to audit and other legal requirements. The team play a pivotal role in ensuring up to date documentation & processing of Company licenses, insurance policies, vehicle licenses etc. They act as linking pin between clients and management as they manage receivables, payables and cash.

HR Employees are our biggest assets and we consider them as part of great Karani Family. Our HR team focuses on getting, keeping and growing satisfied human resources through recruiting, inducting, developing personnel, nurturing employee relations, factory & labor camp management, proper documentation of employee files & legal matters, assisting management in appraisal of employee performance (annually), management of compensation & benefits.

Team Karani

Logistics



Efficient logistics network is a backbone of effective operational framework. Our logistics team is our strength. Our diverse fleet of in-house vehicles ensures that we provide excellent & on-time project deliverables, and projects satisfy our client requirements.

Workshop

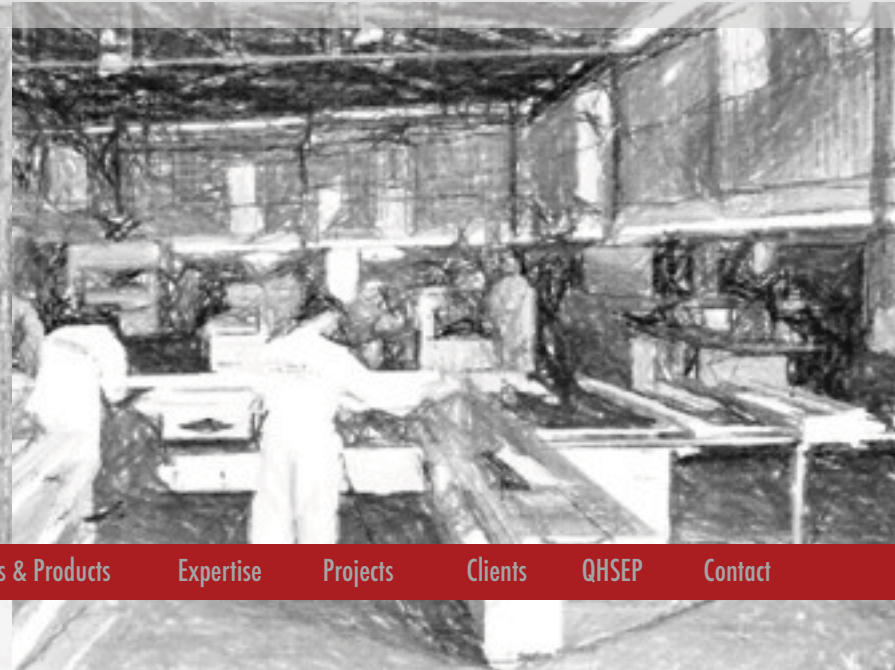
Our shop floor is well equipped with state of the art machinery & equipment for Cutting, Edge-Banding, Post-Forming, Painting and Finishing etc. to manufacture world class, quality furniture and components for fit out projects.

Design Studio

“The design studio is the kitchen of any Interior Design & fit-out Company.”

Our design team looks for the best aesthetic alternatives for the allotted space. Upon receipt of the brief, designers brainstorm the needs, study the concept and propose alternatives. Best possible use of various types of materials is incorporated into the design, according to client’s budget and concepts given by the consultants. The concept drawings are further developed and polished by finer detailed AutoCAD shop drawings and 3D presentation (in coordination with consultant). Focus at all times remains on creating greater value and blending experience with excellence. Estimation & Design team regularly coordinate with projects department and consultants/clients to fine-tune the drawings as per their requirements.

Facilities & Resources



Services

Creating extensive range of high quality, **bespoke** modern-day stylish yet elegant furniture

Beds, study unit, tables, storage units, wardrobes, sofas, dining tables etc.

Residential

Office units, workstations/ desks, partitions, reception unit, conference tables, tabletops, coffee tables, cabinets, sofas, chairs etc.

Corporate

Products

Complete MEP Services

We provide diversified Mechanical Electrical Plumbing (MEP) services, including, but not limited to HVAC system (Heating, Ventilation-extract & fresh air system & Air conditioning), structured cabling/ICT/telephone/ data/ networking, CCTV & security system, fire protection & alarm, internal electrification (fittings & fixtures), lighting systems, home & business automation & control system etc.

Surface finishing

Our expertise in wide range of surface paint & covering services, include different types of paint finishes, wall & furniture paint works, textured walls, wall papers with acoustic & glass/mirror paneling etc. Our expert spray painters adhere excellent standards of quality and provide exclusive look to any project/customized furniture piece.

Integrated Interior Civil Services

Our turnkey solutions include interior civil services like integrated block work, plastering, tiling, marbling, flooring, waterproofing etc. Our strong base in construction sector helps us provide state of the art-civil services for all our interior fit-out projects.

Walls & Partitions

We specialize in both drywall & demountable systems for wall & partitions. Our expertise include-diverse surface decoration painted & textured wall, surface preparations, antibacterial coatings (for hospitals), acoustic paneling (for sound proofing & noise reduction) etc.

Joinery & Wood works

Being known for our aesthetic artistic capabilities and woodworks, our expertise includes all types of carpentry works. Our strength lies in our hi-tech machineries that facilitate innovative carpentry works at Karani. We are provider of bespoke furniture, customized as per individual client/project requirement.

Window/glass treatments

Our services include diversified types of glazing services-aluminum, UPVC, double-glazing, glazed windows with multiple mechanisms.

False Ceilings

We specialize in decorative false ceilings, gypsum, metal, 60 X 60, acoustic, clean room (for hospitals) etc.

Floorings

We do all types of flooring works, including marble fixing, self-patterned, parquet, carpeting, rubber & PVC flooring etc.



Corporate

We are committed to provide our corporate clients, an excellent blend of world-class fit-out design and functionality. We leverage the power of space and provide innovative solutions for optimum space planning. Our expertise in this segment is reflected in diverse projects undertaken. Be it a clinic or hospital, bank or money exchange, office or educational institute, auditorium or theaters, we put in our best efforts to meet and exceed our client expectations. We've crafted our name in providing quality turnkey fit-out services to healthcare segment.

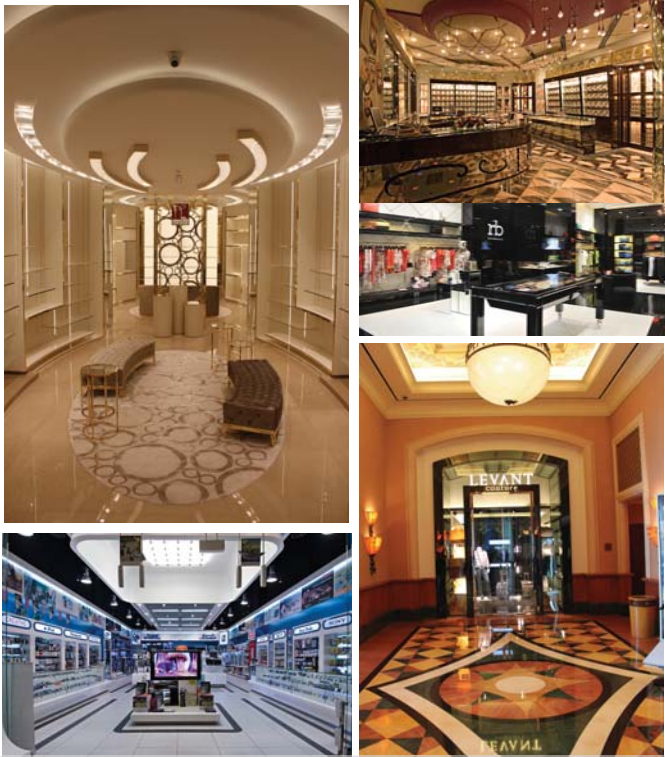
We create
Make world a better place

Hospitality

We believe in celebrating diversity and creating diverse masterpieces. Our expertise is portrayed in some of the best hotels, restaurants & coffee shops in the ME region. We've become leading contractor in this segment and would continue to serve the hospitality industry by providing unique fit-out services.

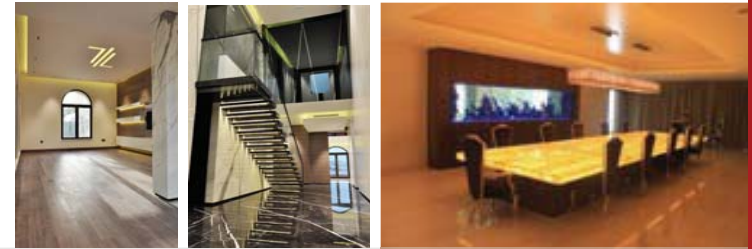


We listen to your needs & Create your dream space!



Retail

They say it's an aspirational industry; a segment that is ruled by drives to reach the pinnacle of luxurious life. We, at Karani cater the design and fashion conscious retail world by providing top class experience oriented services. Whether it's a jewelry showroom or a fashion/lifestyle shop, electronics or textile outlet, we ensure that our services matches the client requirements and ultimately we provide the quality look and feel, best suited to their brand name & image.

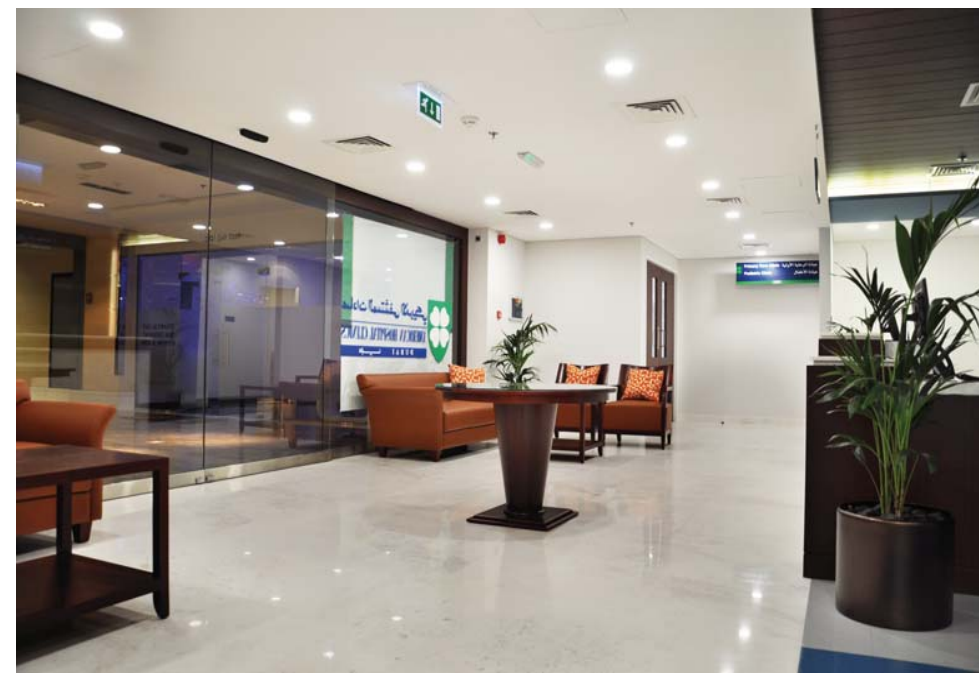


Residential

Our focus is on quality & values. When it comes to residential spaces, we put in our mind, heart & soul to create a place where you feel special and comfortable at all times. Our expertise in villas & apartments is reflected in wide number of challenging projects undertaken. We provide turnkey fit-out services and take care of all the relevant interior and exterior works. Our flagship projects include villas at Palm Jumeirah, Emirates Hills & Arabian Ranches.

American Hospital Clinic

Media City, Dubai



The Indian High School

Oud Metha, Dubai



Magnificent Auditorium





GECO-MPC Office

Airport Road, Dubai

Gazebo Restaurant

DIFC, DCC, MCC & MATAZER



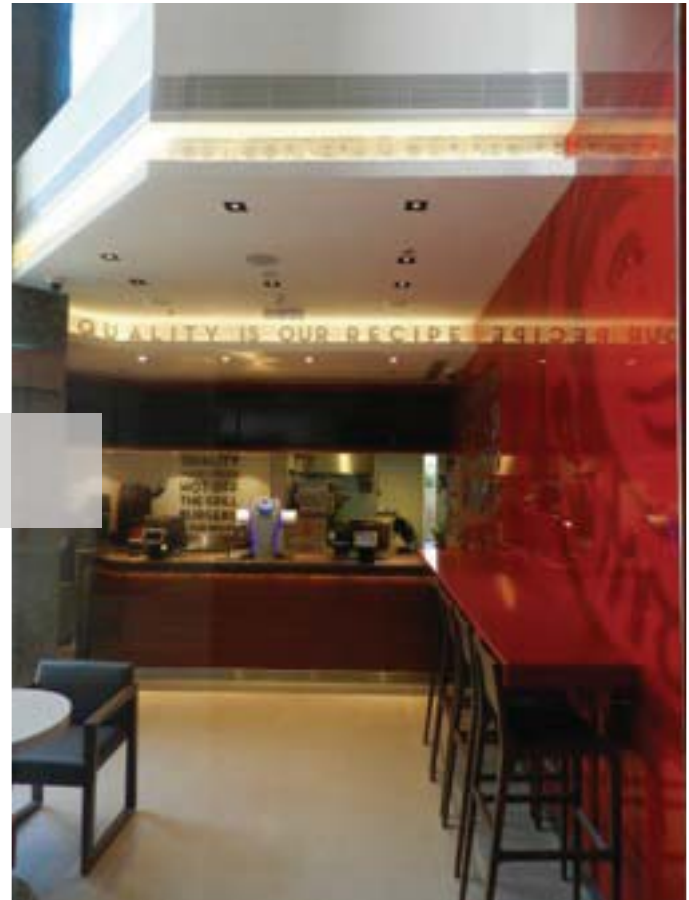
Al Hallab Restaurant & Sweets

Dubai Mall, Dubai



Wendy's

Al Attar Business Tower, Dubai



Business Café

Reem Tower, Dubai



Buffalo Wild Wings



Jumeirah



Al Hallab Bab el Bahr





Roccobarocco



Marina Mall



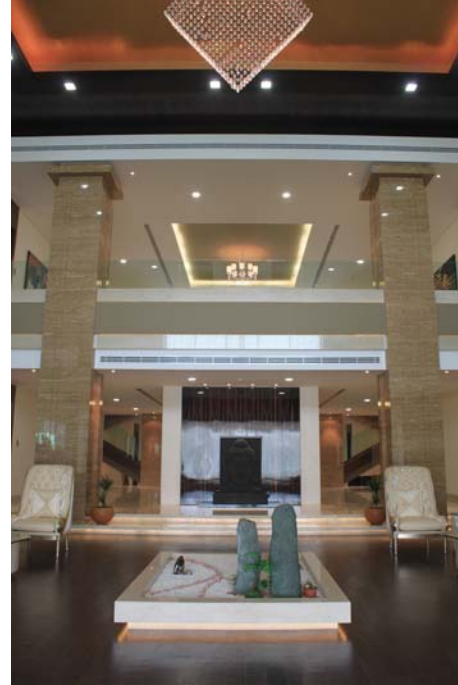
Premium Furs & Fashion





Mall of the Emirates, Dubai

Opera Shoes



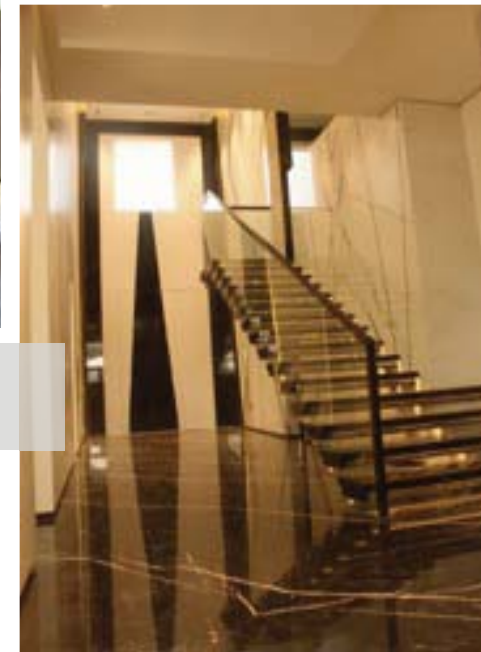
Villa

Emirates Hills



Villa

Palm Jumeirah



Our Clients



Bonded with trust
Trusted Collaborations

Quality Policy

The management & staff of Karani Interior Decorators are committed to development and implementation of the quality management system and continuously improving its effectiveness.

The management of Karani is responsible for communicating to all functions the importance of meeting, client, legal and regulatory requirements, conducting periodic management review and evaluating performance of the quality management system. We, at Karani Interiors, are totally committed to meeting and maintaining highest standards of quality at all times.

We shall always strive to meet and surpass the expectations of our clients by:

- ◆ Providing our clients high quality services in a quick, efficient and accurate manner
- ◆ Using the most modern technology, best material and standard work procedures
- ◆ Clear communication with our client, consultant and efficient follow-up for project activities, to facilitate the timely completion of project.
- ◆ Regularly enhancing the quality of our system, resources, vendors and sub-contractors
- ◆ Ensuring that the work environment is comfortable to project staffs
- ◆ Well skilled and motivated employees
- ◆ Completion of project as per project specification
- ◆ Optimal & efficient usage of project resources



Application of International Quality Standards



ISO 9001:2008

Health & Safety Policy

As ISO 9001-2008 certified company, Karani Interior Decorators L.L.C. is committed to a policy of following safe working practices at all levels of organisation and project execution.

We are committed to preventing all incidents and ill health arising out of our business activities through effective operational control procedures. The safety and health of our employees and one affected by our activities is the highest priority of the company.

- ◆ *Providing our clients high quality services in a quick, efficient and accurate manner.*
- ◆ *We shall comply with all applicable local regulations and contractual obligations.*
- ◆ *We provide safest possible work environment to employees and ensure that prevention of incidents in all phases of administration and operation.*
- ◆ *Each supervisor will make the safety and health of all employees an integral part of their regular management function and supervisors will be evaluated on safety and health performance.*
- ◆ *Each employee will adhere to established company Health & Safety policy. Employees are required to work safely as a condition of employment. This ensures that everyone's safety and welfare is taken care of, making our sites a safer and healthier place for work.*
- ◆ *We take due care in providing adequate safety training to employees prior to allowing an employee to begin work. In addition, routine safety drills and checks are conducted at sites to increase the safety awareness at all levels and create a risk-free environment in all our sites.*
- ◆ *All necessary precautions are undertaken to provide full safety to site workers and staff. Safety banners and information are displayed on each of our project site in progress. Proper arrangements are made for first aid & emergency conditions. We take utmost care to ensure accidents, if any, are immediately taken care of and proper first aid & medical help provided on time.*
- ◆ *Health & Safety is everyone's business, and everyone (management, supervisors and employees) will be held accountable for its application & full adherence.*

The elements of this policy are amended as per site-specific requirements depending upon the working conditions and challenges in project execution.

We keep safety first
Health & safety for all

Environment Policy

Karani Interior Decorators L.L.C. believes that business is responsible for achieving good environmental practice and operating in a sustainable manner.

Protecting the environment is the responsibility of every staff in the organization. We are committed to sustainable construction and minimize any adverse impact on the environment resulting from our business activities.

We are committed to deliver quality and environment friendly services with minimal negative impact to the environment through the following principles:

- ◆ *Compliance with applicable legal requirements and other requirements to which the company subscribes, which relate to its environmental aspects.*
- ◆ *Focus on prevention of pollution, waste minimization and optimum resource conservation as critical considerations within our core management processes.*
- ◆ *Regular performance reviews to ensure that environmental objectives and the requirement of interested parties are met.*
- ◆ *Provision for staff training to ensure understanding, implementation and development of these principles through our business.*
- ◆ *Cleanliness is next to godliness; this virtue keeps the health quotient high in workshop, office and sites. We shall comply with all applicable local regulations and contractual obligations.*
- ◆ *Continual improvement of processes impacting environment.*

All staff will follow the requirements of the Environmental Management System in the performance of their tasks and will ensure this policy is supported and maintained. This policy will be communicated to our customers, suppliers and subcontractors.

Environment friendly operations
Creating sustainable future

KARANI INTERIOR DECORATORS L.L.C.

DESIGN - SUPERVISION - EXECUTION

T: 00971-04-3390900 F: 00971-04-3390401

E: info@karanigroup.com, karani98@emirates.net.ae

Visit us: Al Quoz Industrial Area #3, Dubai, UAE P.O.Box: 6214

Makani No : 2260984149



www.karanigroup.com

